

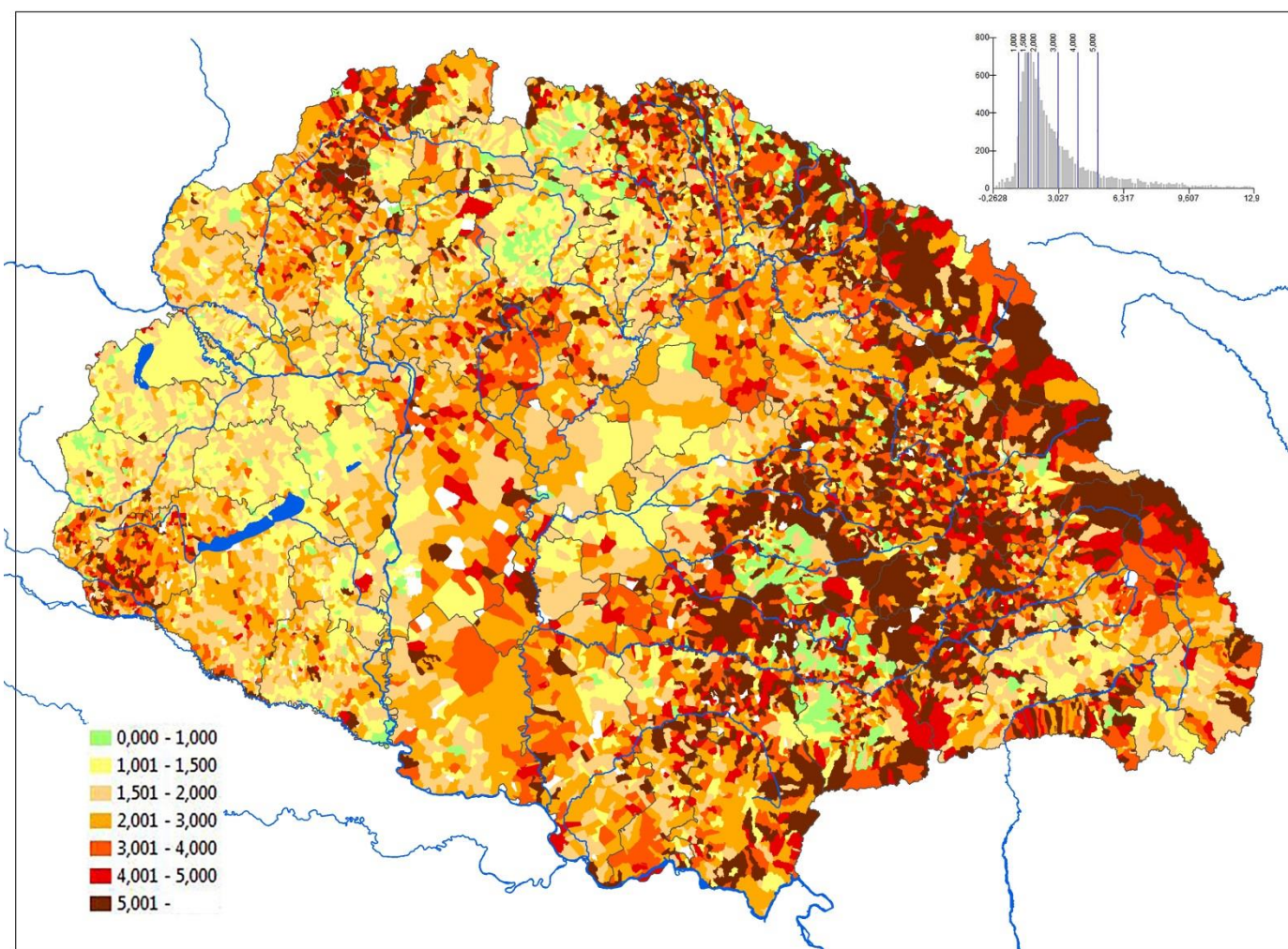
Wishing you a Happy New Year with the hope that you will have many blessings in the year to come!

The team of the **GISa Hungarorum***:

Balázs, Pál – Bottlik, Zsolt – Demeter, Gábor – Frisnyák, Zsuzsa – Jakobi, Ákos – Kollányi, László – Kollányi, Péter – Konkoly-Gyuró, Éva – Nagy, Béla – Nagy, Mariann – Németh, Gábor – Pap, József – Péntes, János – Radics, Zsolt – Szabó, Gergely – Szilágyi, Zsolt – Szulovszky, János

January 2018

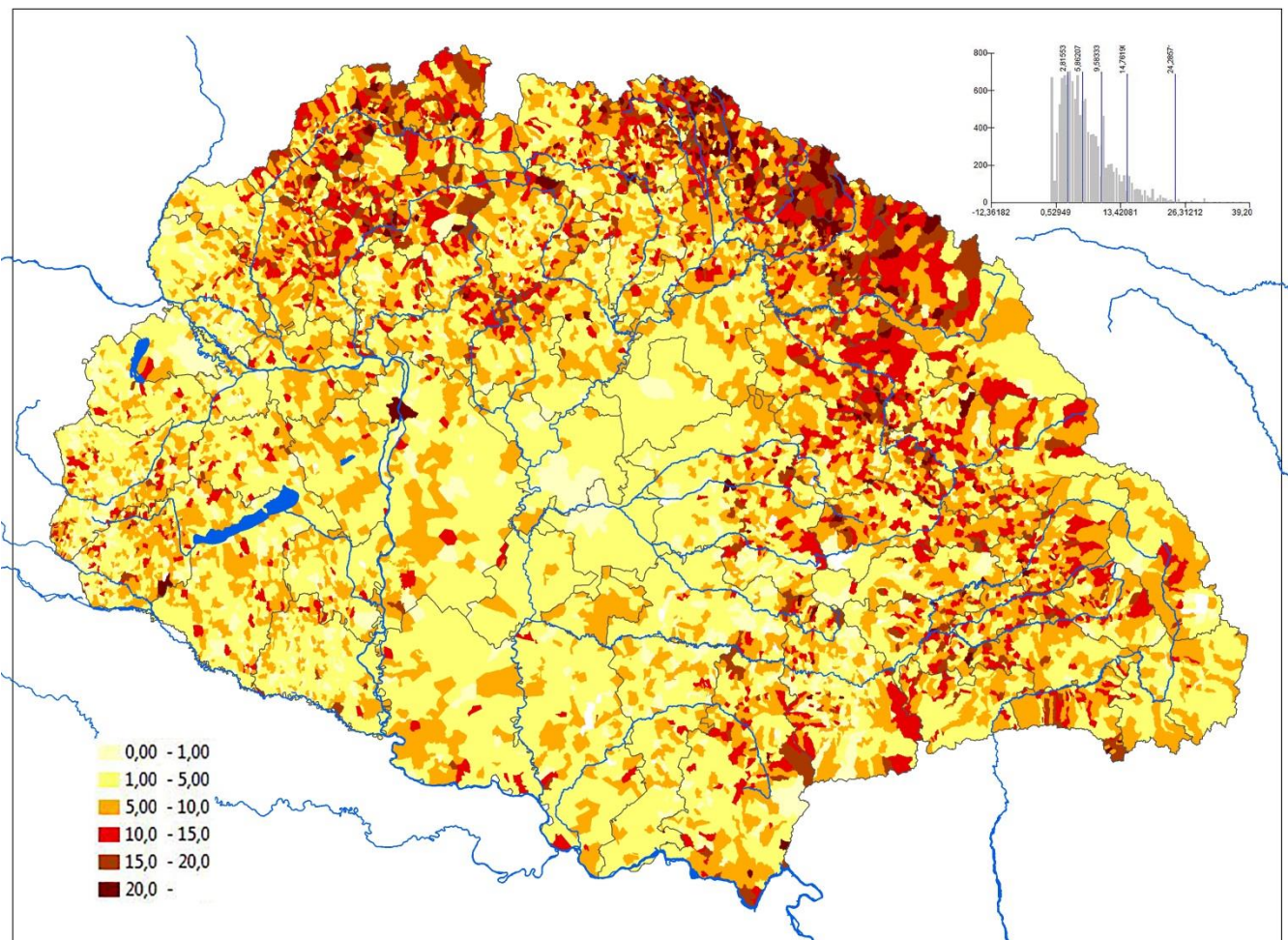
Sunday	Monday	Tuesday	Wednesday	Thursday	Friday	Saturday
	1	2	3	4	5	6
7	8	9	10	11	12	13
14	15	16	17	18	19	20
21	22	23	24	25	26	27
28	29	30	31			



The increase in the number of literate people between 1880 and 1910 (1880=1)

February 2018

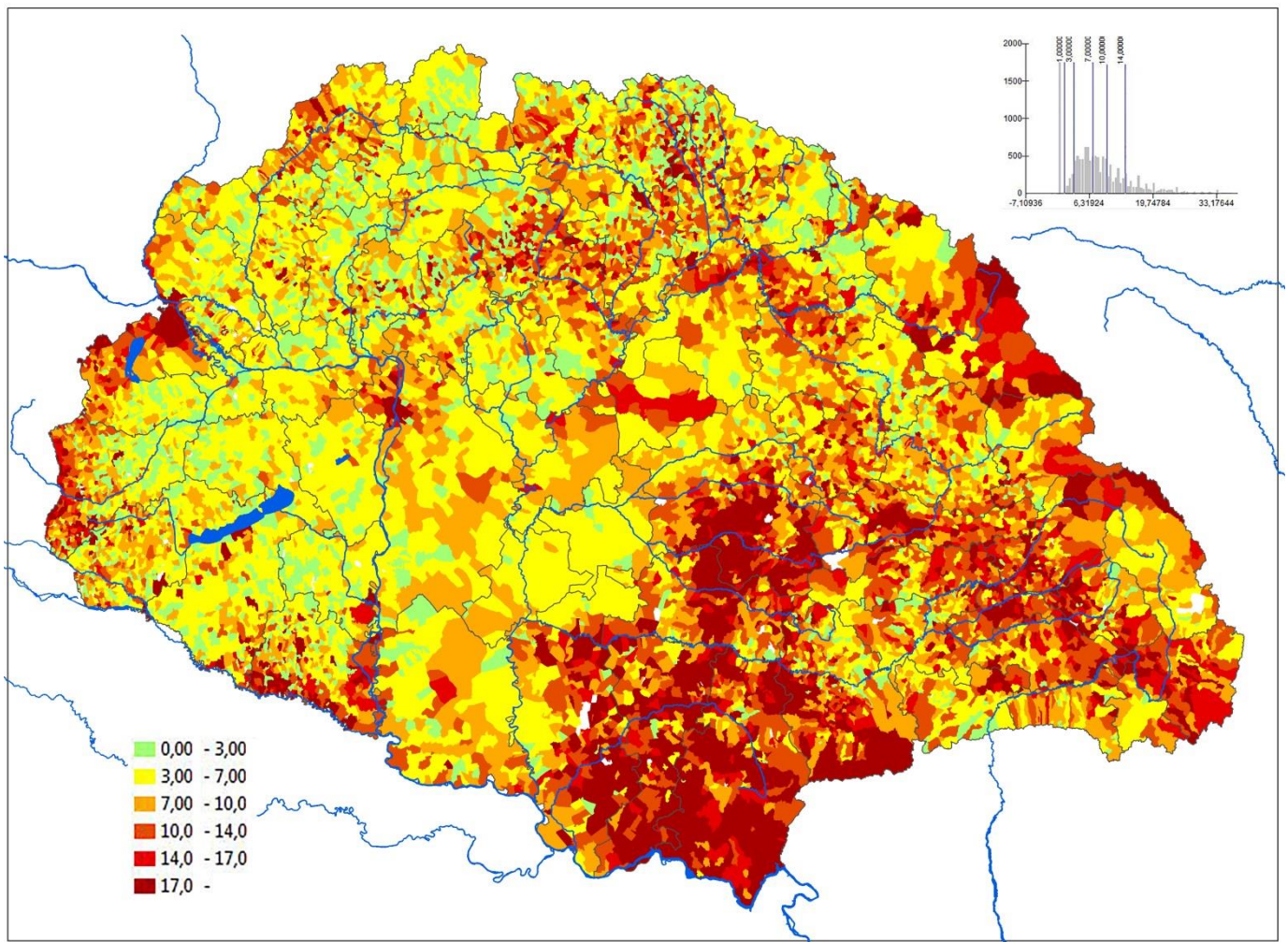
Sunday	Monday	Tuesday	Wednesday	Thursday	Friday	Saturday
					1	2
4	5	6	7	8	9	10
11	12	13	14	15	16	17
18	19	20	21	22	23	24
25	26	27	28			



The share of scarlet fever + measles + whooping cough from total deaths in %
(yearly average between 1901 and 1910)

March 2018

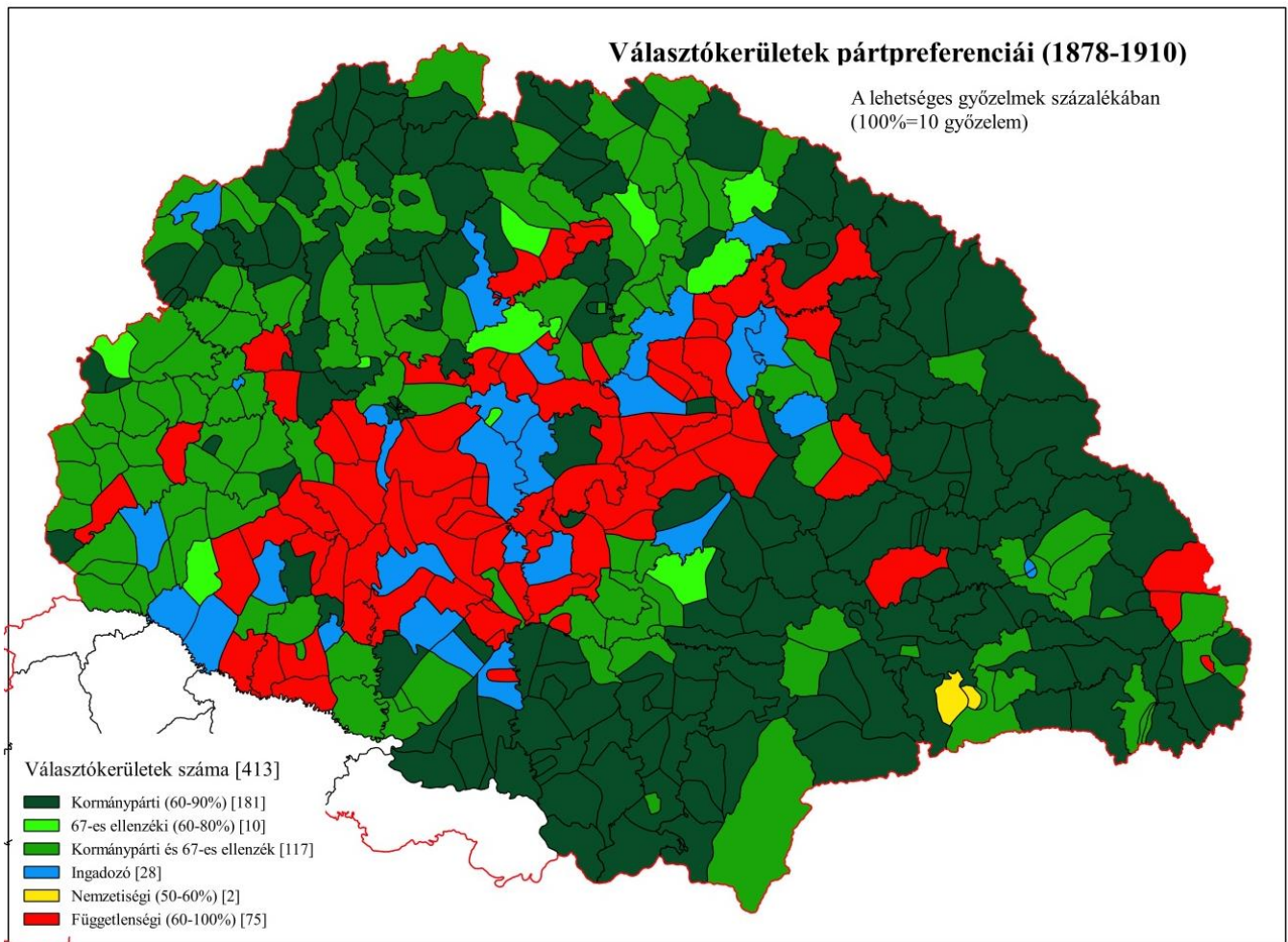
Sunday	Monday	Tuesday	Wednesday	Thursday	Friday	Saturday
					1	2
4	5	6	7	8	9	10
11	12	13	14	15	16	17
18	19	20	21	22	23	24
25	26	27	28	29	30	31



The share of illegitimate births from total births in % (yearly average between 1901 and 1910)

April 2018

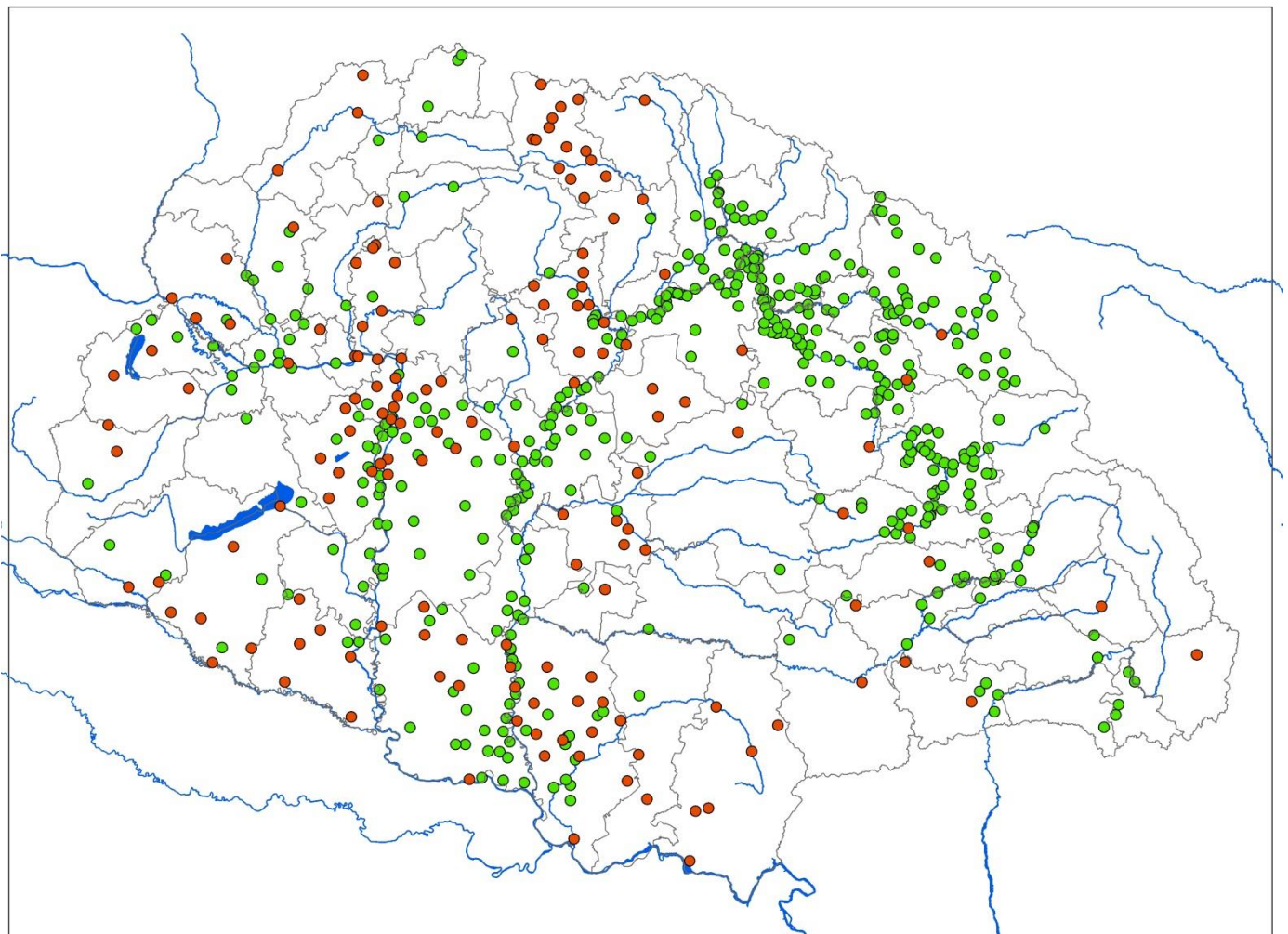
Sunday	Monday	Tuesday	Wednesday	Thursday	Friday	Saturday
1	2	3	4	5	6	7
8	9	10	11	12	13	14
15	16	17	18	19	20	21
22	23	24	25	26	27	28
29	30					



Political preferences of electoral districts between 1878-1910 (10 elections) (dark green = governing parties over 60%, light green = moderate opposition over 60%, red = independence parties over 60%, blue = hesitant). Map by József Pap (Eger)

May 2018

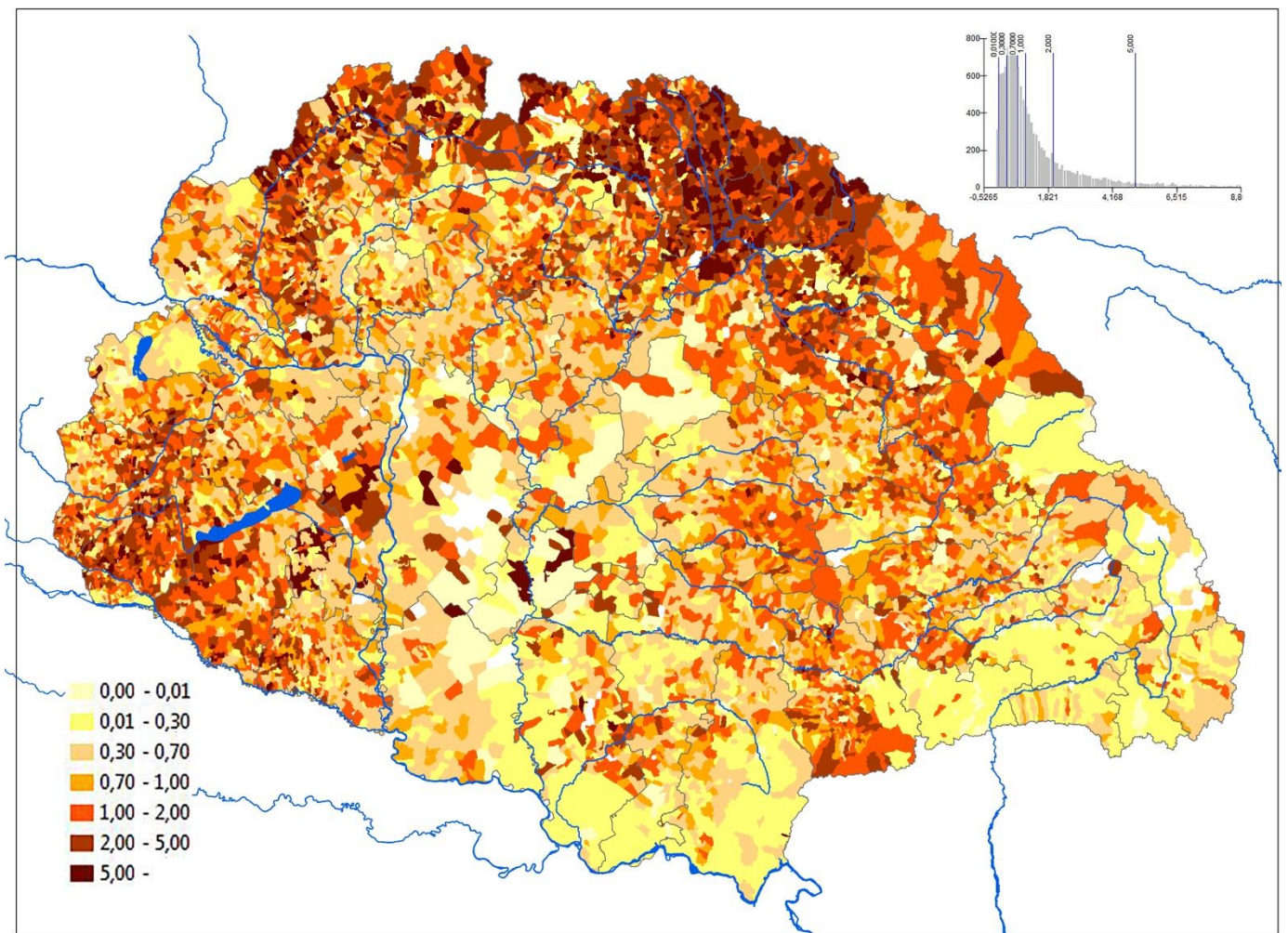
Sunday	Monday	Tuesday	Wednesday	Thursday	Friday	Saturday
		1	2	3	4	5
6	7	8	9	10	11	12
13	14	15	16	17	18	19
20	21	22	23	24	25	26
27	28	29	30	31		



Pharmacies in 1887 and settlements suffering from cholera in 1893. Map by *Zsuzsa Frisnyák (HAS RCH)*

June 2018

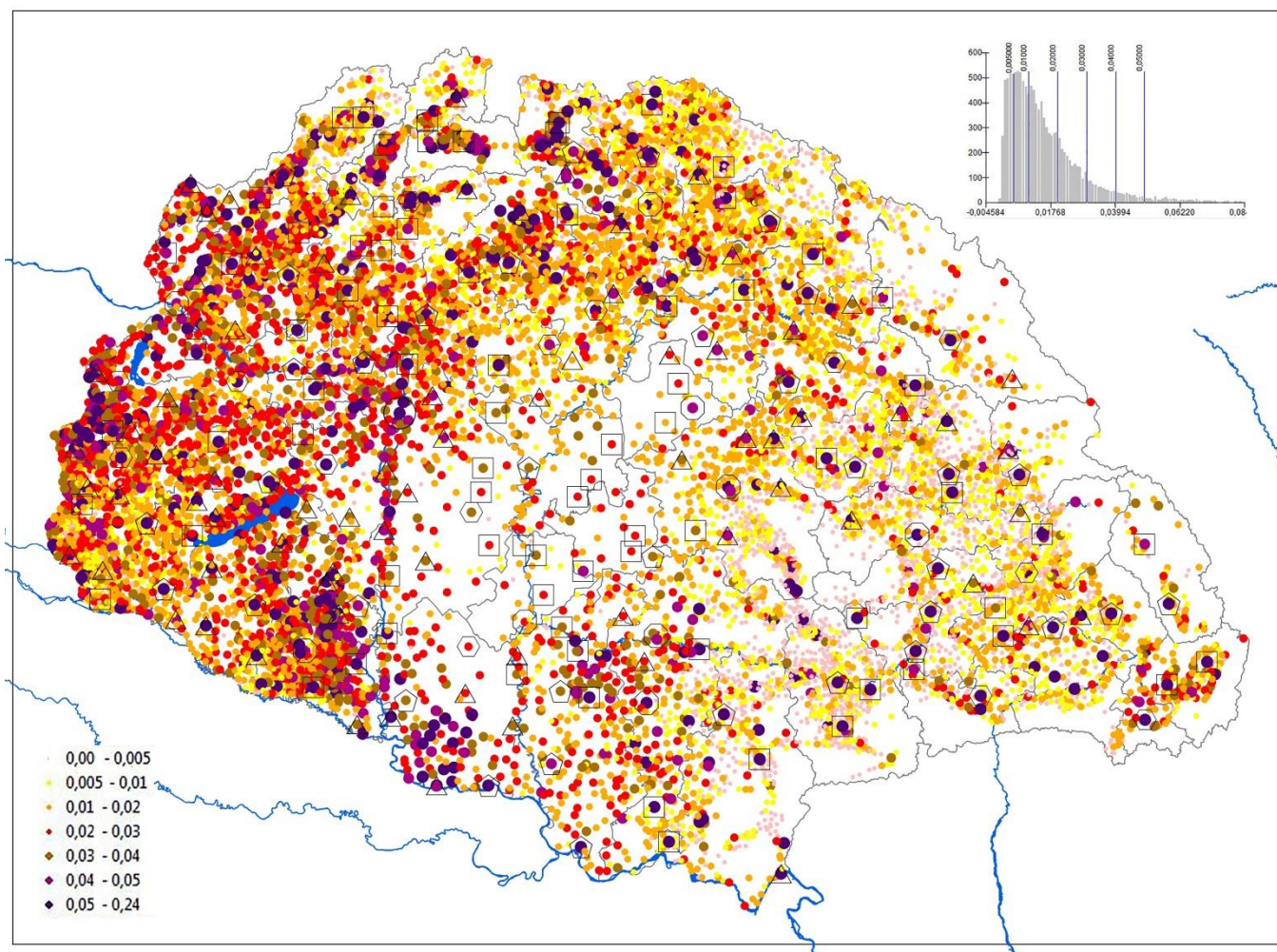
Sunday	Monday	Tuesday	Wednesday	Thursday	Friday	Saturday
					1	2
3	4	5	6	7	8	9
10	11	12	13	14	15	16
17	18	19	20	21	22	23
24	25	26	27	28	29	30



State direct taxes measured to local communal wealth in 1908 (1=100%)

July 2018

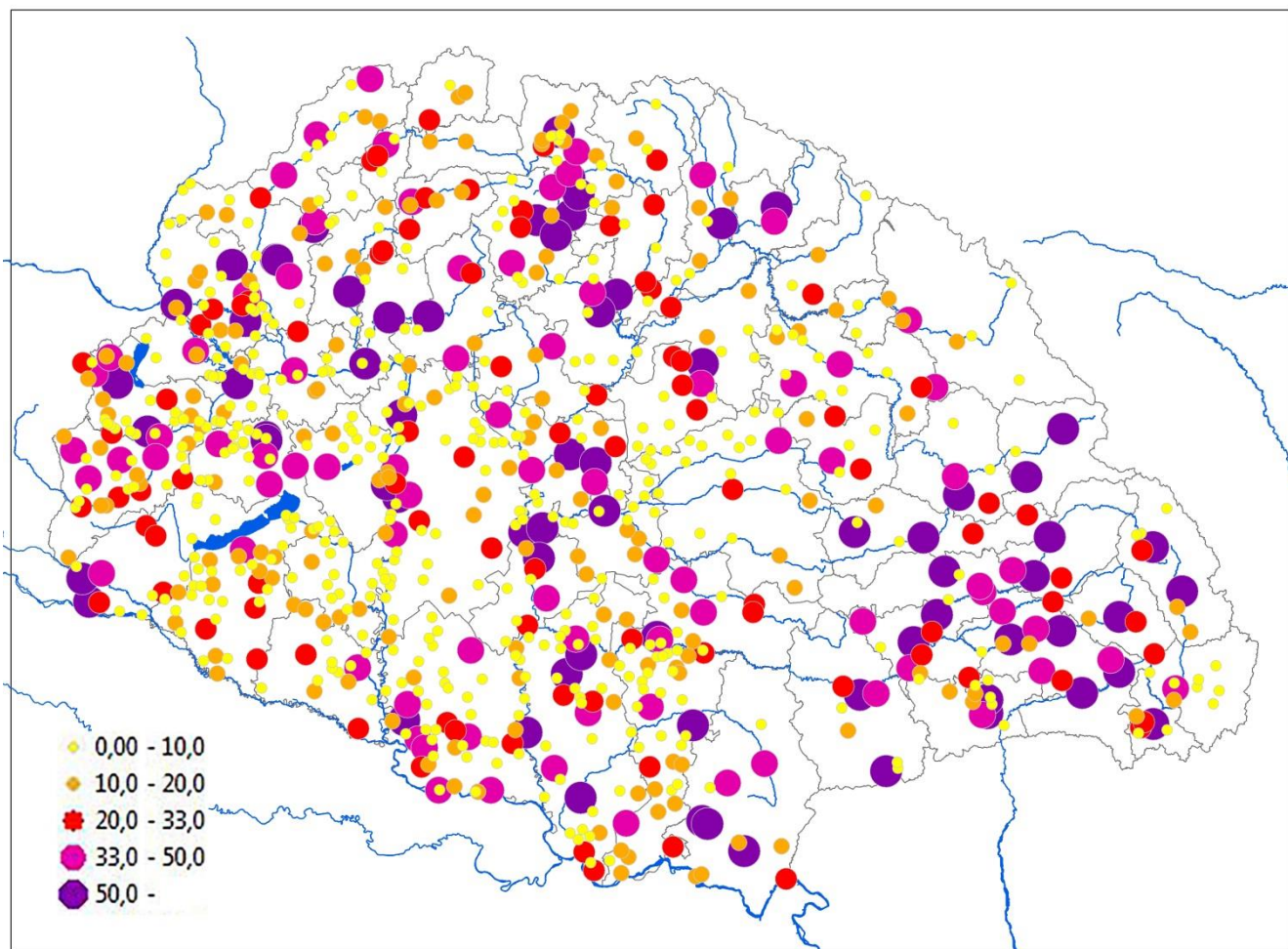
Sunday	Monday	Tuesday	Wednesday	Thursday	Friday	Saturday
1	2	3	4	5	6	7
8	9	10	11	12	13	14
15	16	17	18	19	20	21
22	23	24	25	26	27	28
29	30	31				



The proportion of artisans and craftsmen in 1892 according to the Jekelfalussy inventory (1=100%). Map by *János Szulovszky (HAS RCH)*

August 2018

Sunday	Monday	Tuesday	Wednesday	Thursday	Friday	Saturday
			1	2	3	4
5	6	7	8	9	10	11
12	13	14	15	16	17	18
19	20	21	22	23	24	25
26	27	28	29	30	31	



Members of civil associations measured to literate persons (in %, 1880)

September 2018

Sunday

Monday

Tuesday

Wednesday

Thursday

Friday

Saturday

1

2

3

4

5

6

7

8

9

10

11

12

13

14

15

16

17

18

19

20

21

22

23

24

25

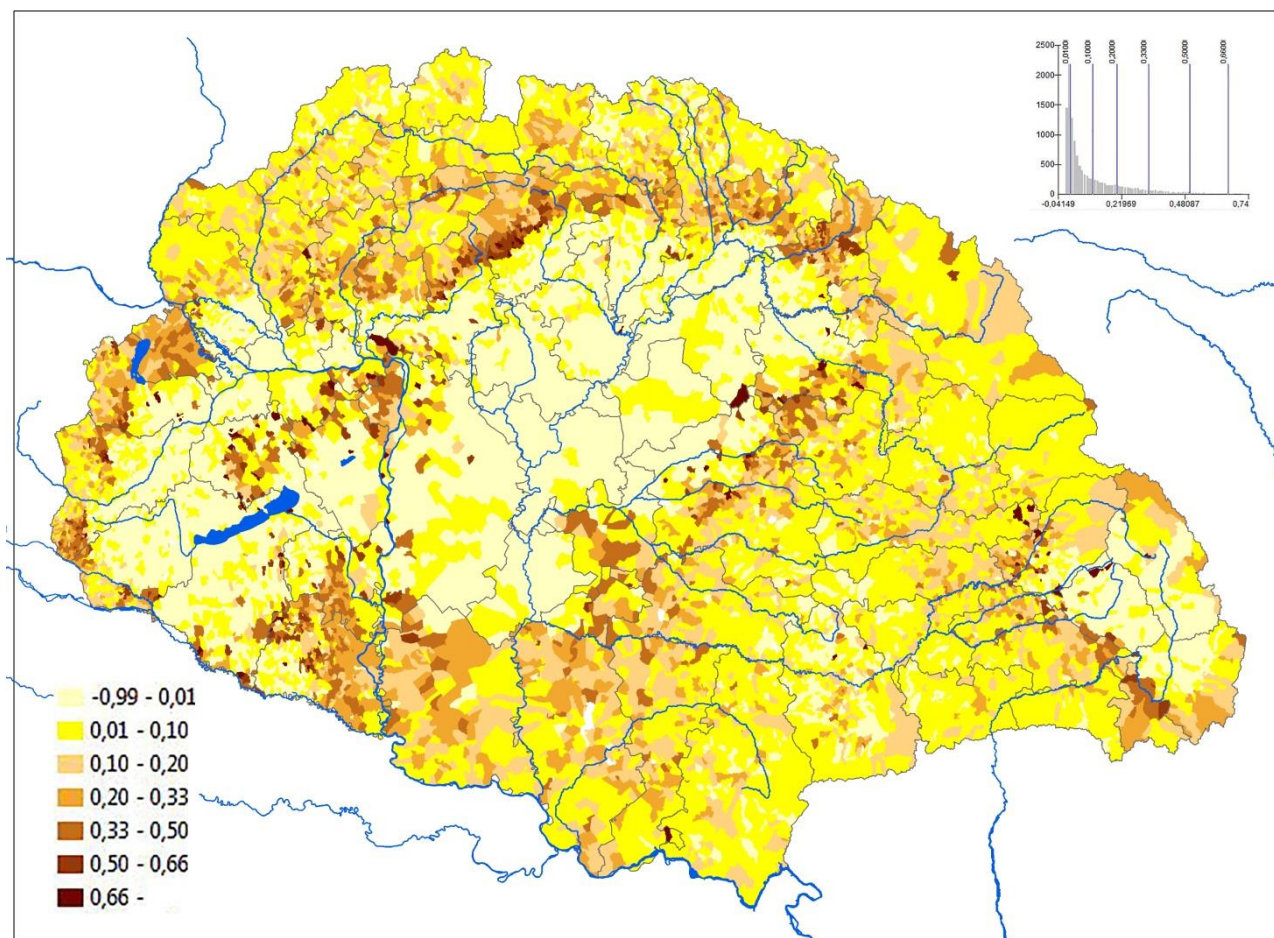
26

27

28

29

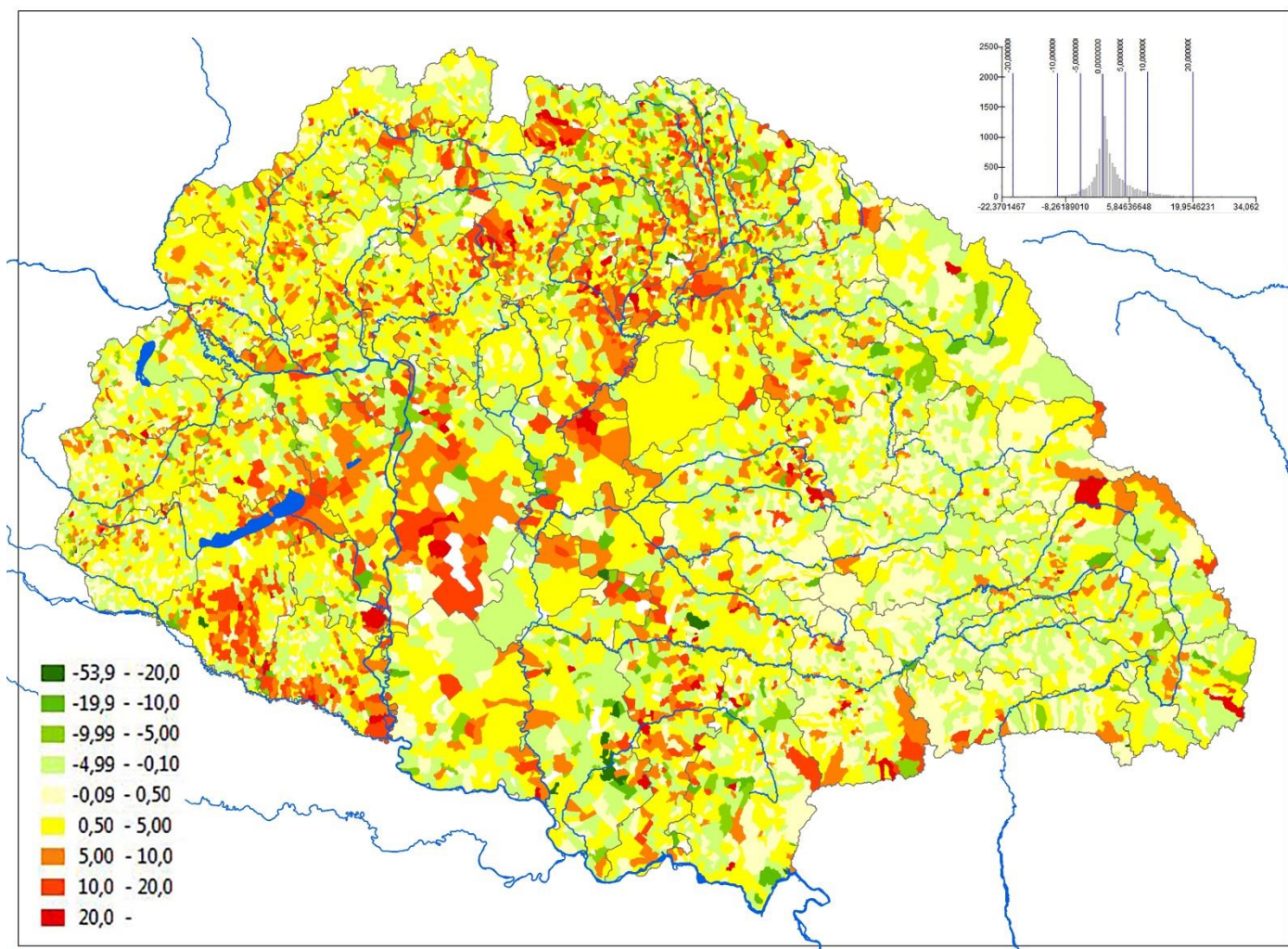
30



Difference (%) between population able to speak Hungarian and population of Hungarian mother tongue in 1910 (1=100%)

October 2018

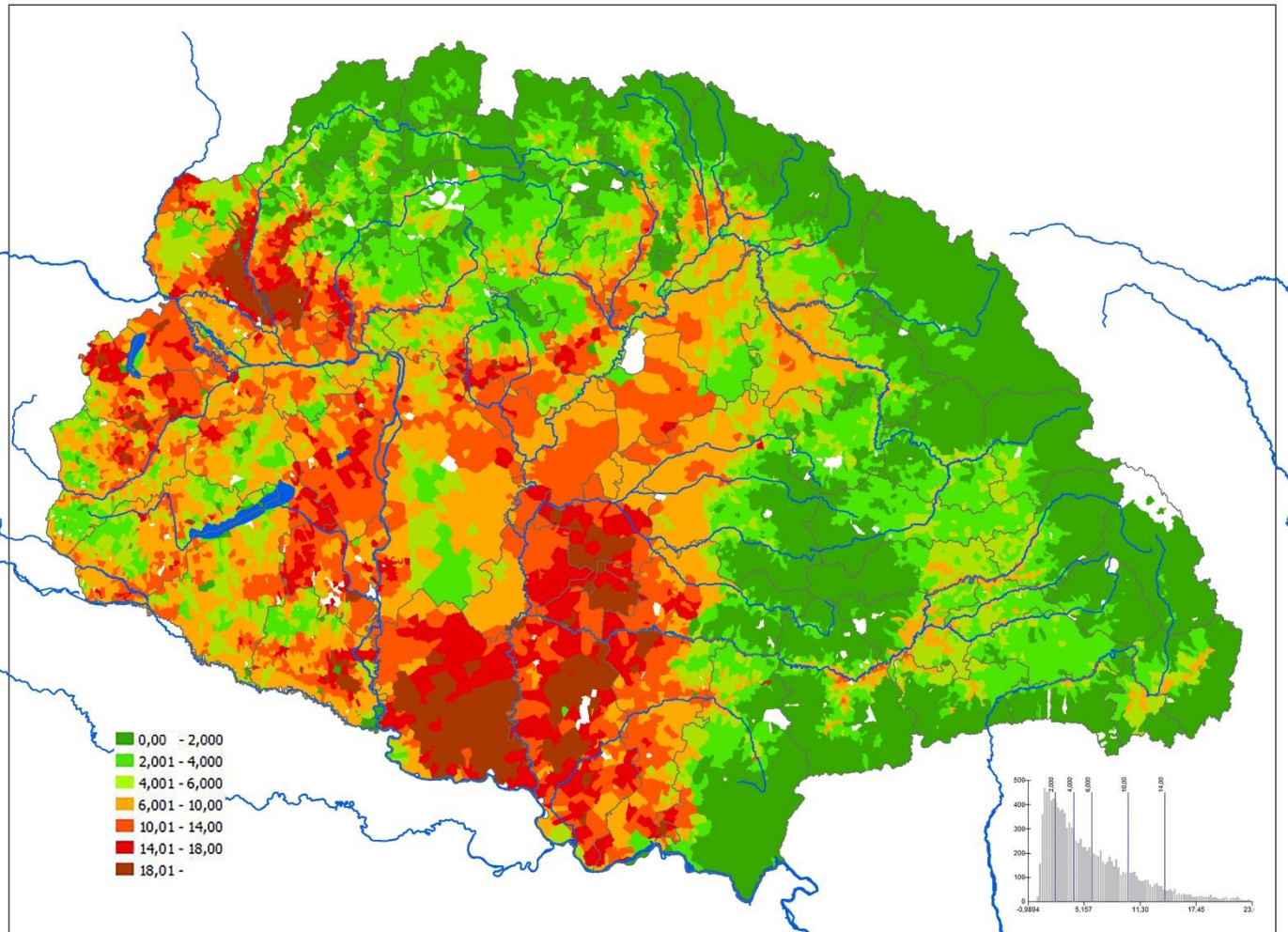
Sunday	Monday	Tuesday	Wednesday	Thursday	Friday	Saturday
	1	2	3	4	5	6
7	8	9	10	11	12	13
14	15	16	17	18	19	20
21	22	23	24	25	26	27
28	29	30	31			



The change in proportion (%) of Roman Catholics (1910%-1880%)

November 2018

Sunday	Monday	Tuesday	Wednesday	Thursday	Friday	Saturday
					1	2
4	5	6	7	8	9	10
11	12	13	14	15	16	17
18	19	20	21	22	23	24
25	26	27	28	29	30	



Net agrarian income per cadastral holds in 1910 (in K)

December 2018

Sunday

Monday

Tuesday

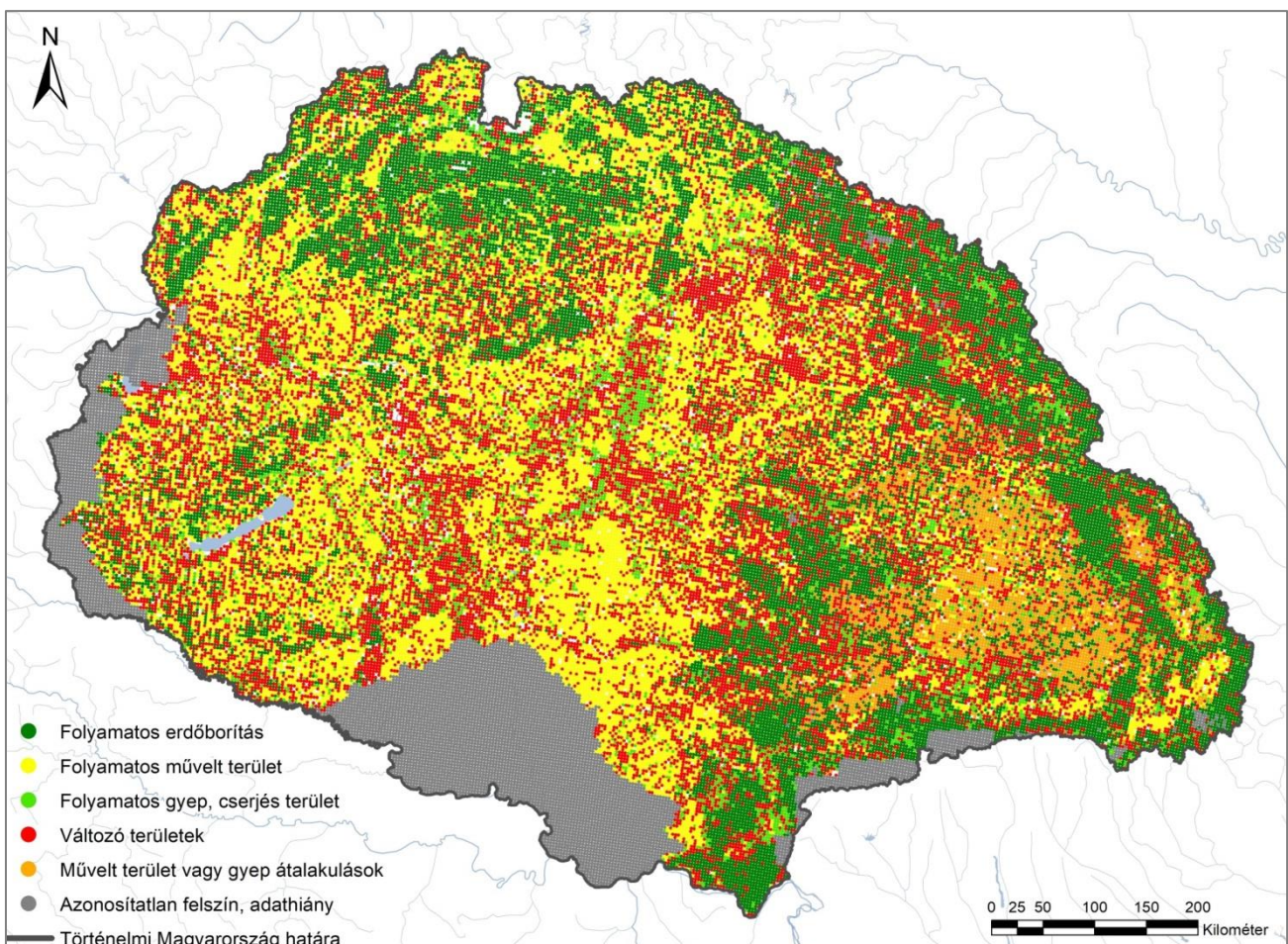
Wednesday

Thursday

Friday

Saturday

							1
2	3	4	5	6	7	8	
9	10	11	12	13	14	15	
16	17	18	19	20	21	22	
23	24	25	26	27	28	29	
30	31						



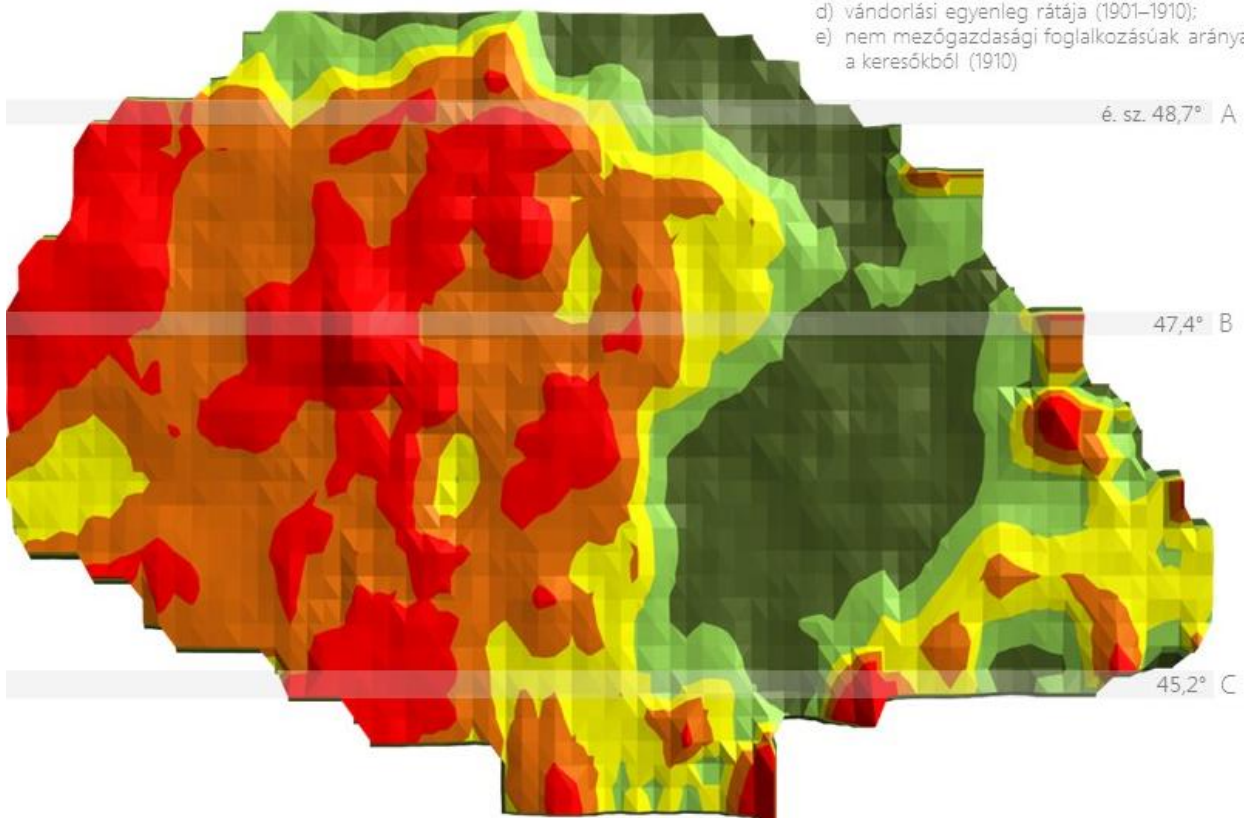
Stability of landuse in Hungary between the 1850s and 1930s (red = changes). Map by Éva Konkoly-Gyuró and Pál Balázs (Sopron)

January 2019

Sunday	Monday	Tuesday	Wednesday	Thursday	Friday	Saturday
		1	2	3	4	5
6	7	8	9	10	11	12
13	14	15	16	17	18	19
20	21	22	23	24	25	26
27	28	29	30	31		

Készült az MTA Történettudományi Intézet, Térinformatikai rendszer-kiépítése Magyarország és az Osztrák–Magyar Monarchia történetének tanulmányozásához c. projekt keretében, 2015–2017, OTKA (K111766)

- a) írni-olvasni tudók aránya a 6 éven felüli lakosságból (1910);
- b) orvosi kezelésben részesültek aránya az elhunytak közül (1910);
- c) jobb minőségű lakóházak aránya (1910);
- d) vándorlási egyenleg rátája (1901–1910);
- e) nem mezőgazdasági foglalkozásúak aránya a keresőkből (1910)



Regional development level of Hungary in 1910 using complex approach (based on 6 variables). Map by Zsolt Szilágyi (Debrecen)